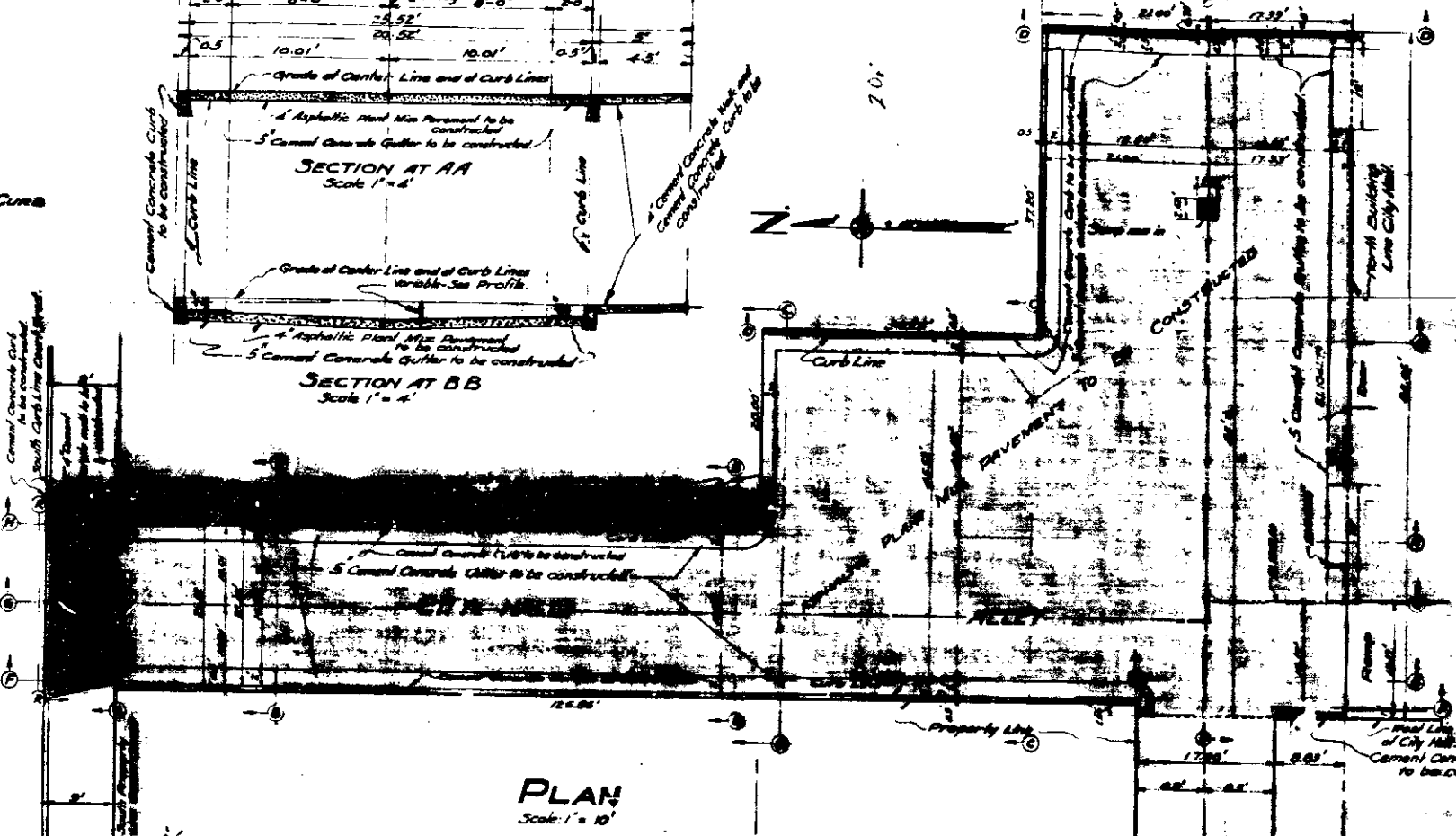
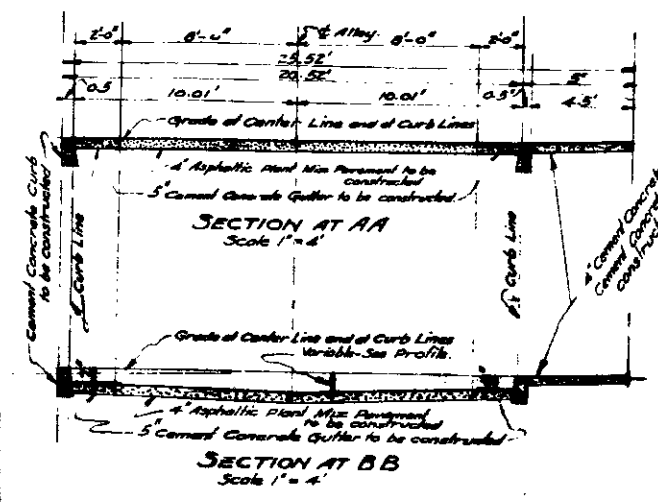
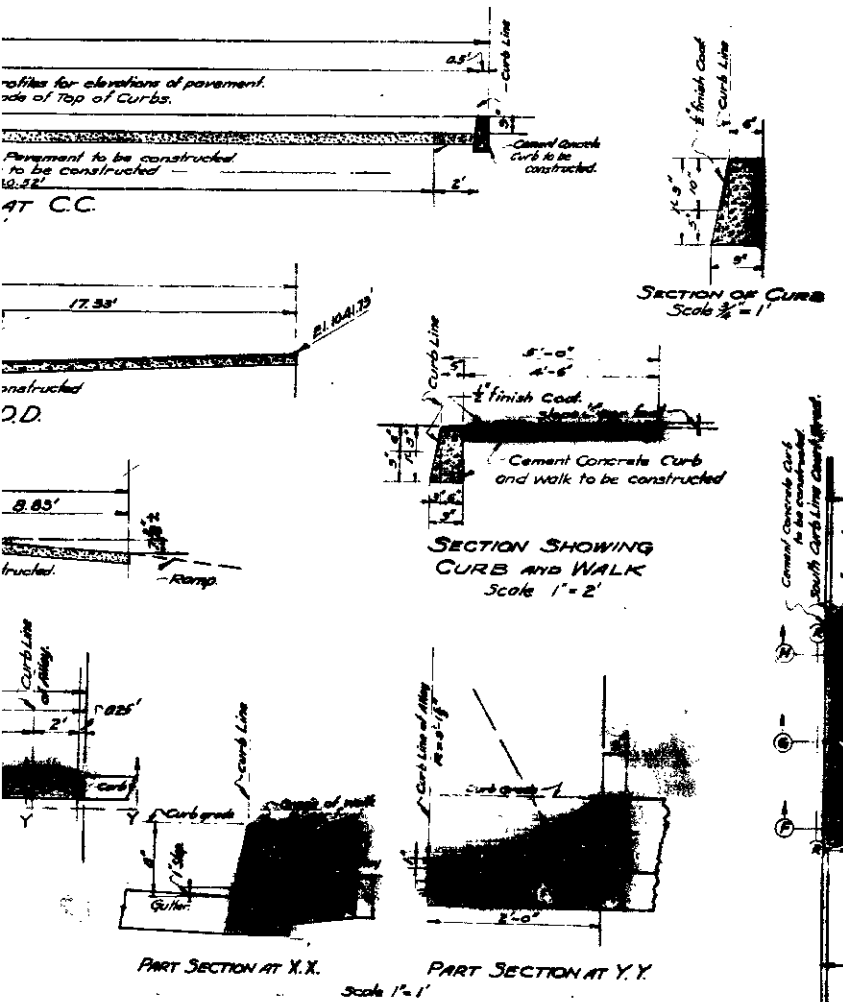


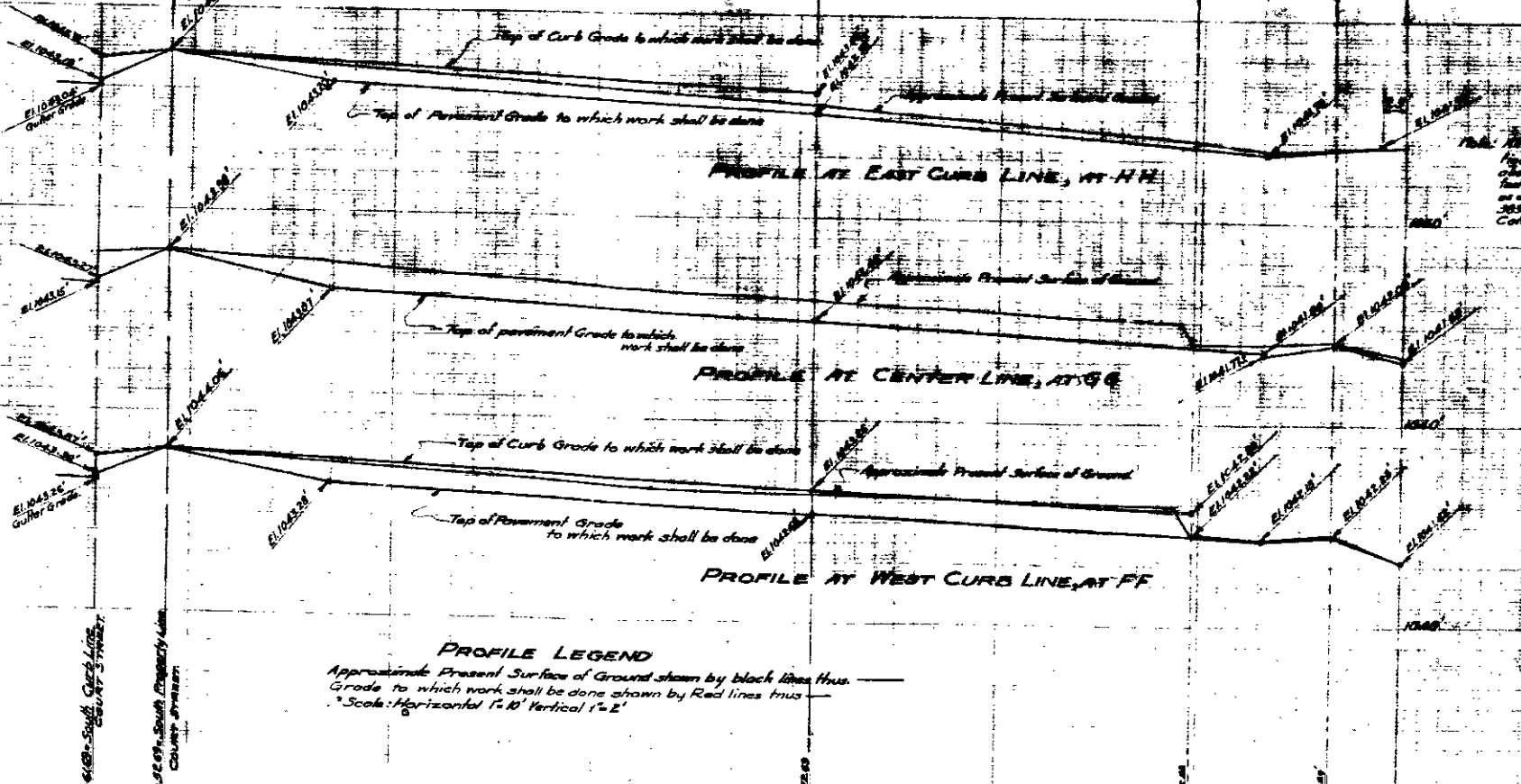
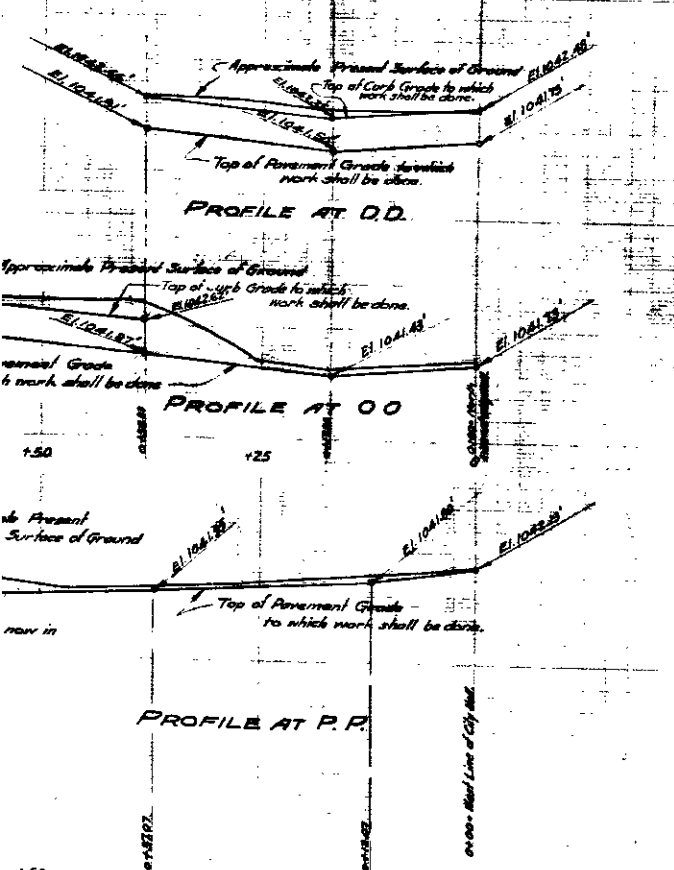
PLAN No. 1259
FOR THE IMPROVEMENT OF
CITY HALL ALLEY
CITY OF SAN BERNARDINO
CALIFORNIA

December 1937
 Scale as shown
 Chas. L. Faulke
 City Engineer



Note: Driveways to be constructed thru curbs at locations specified by the City Engineer.

Chas. L. Faulke



Note: The location of the City Hall Alley is shown in plan and section. The location of the City Hall Alley is shown in plan and section. The location of the City Hall Alley is shown in plan and section.

LEGEND

- 1" or 1/2" (as shown) shown in plan
- 1" or 1/2" (as shown) shown in section
- 4" means 4-inch
- 5" means 5-inch
- 5" Cement Concrete Gutter to be constructed shown thus in plan and section
- 4" Cement Concrete curb to be constructed shown thus in plan and section
- 4" Asphaltic Plant Mix Pavement to be constructed shown thus in plan and section
- 5" Cement Concrete Gutter to be constructed shown thus in plan and section

PROFILE LEGEND
 Approximate Present Surface of Ground shown by black lines thus —
 Grade to which work shall be done shown by red lines thus —
 Scale: Horizontal 1" = 10' Vertical 1" = 2'